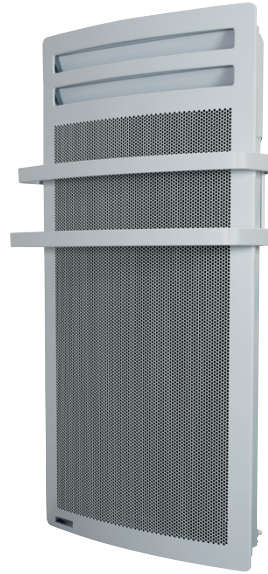


Opéra B (7635) Radiant Towel Warmer

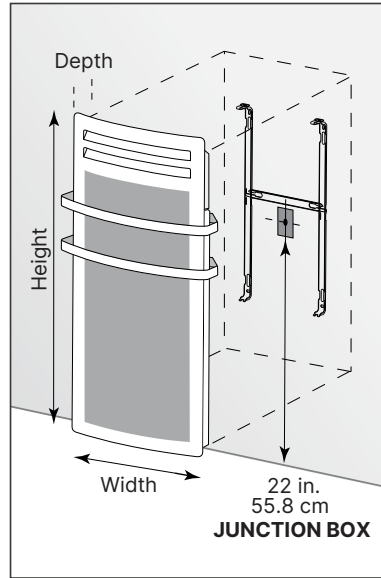


5 year element
warranty
2-year limited
warranty

FEATURES

- Color** - White
- Finish** - Epoxy/polyester anti-rust powder coating resistant to UV rays
- Voltage** - 240/208 V, 60 Hz, 1-phase
- Wattage** - Available in 1000 W and 1500 W
- Construction** - Convex casing with rounded corners for maximum space saving
 - Perforated front panel for better radiant heat diffusion
 - High-limit temperature control with automatic reset
 - Two towel bars included
- Heating Element** - High-efficiency monoblock element constructed from ribbed aluminum alloy
- Control** - Programmable built-in electronic proportional-action digital thermostat, ultra-precise to 1/10 °C (1/5 °F), located at the top of the unit
 - LCD backlit display with digital controls lockable by key combination and the ability to add a code for unlocking
 - Temperature display format (°C or °F)
 - “On-Off” button
 - “Manual” button to choose from Comfort, Economy and Frost Protection modes
 - “Open-window” button to activate the open-window detection function
 - “Automatic” button
 - Energy use indicator
 - Heating indicator light
- Installation** - Quick surface-mounted installation with the included wall-mounting bracket
 - Flexible cable with electrical wall box cover plate included
 - Requires installation of a wall electrical box not supplied
- Warranty** - 5-year heating element, 2-year parts and defects
- Applications** - Bathroom

Opéra B (7635) Radiant Towel Warmer



Without towel bars			
Length		Depth [†]	
in	cm	in	cm
17-5/16	44.0	5-1/16	12.8

With towel bars			
Length		Depth [†]	
in	cm	in	cm
18-7/8	47.9	7-1/16	17.9

†Depth shown includes wall bracket.

Product No.	QTY	UPC	VOLTS	WATTS	HEIGHT		WIDTH with towel bar		DEPTH with towel bar		WEIGHT	
					IN	CM	IN	CM	IN	CM	LB	KG
Opéra B - WHITE												
X-7635-C10-BB		774725006387	240/208	1,000/750	33-5/16	84.6	18-7/8	47.9	7-1/16	17.0	17.4	7.9
X-7635-C15-BB		774725006394	240/208	1,500/1,125	41-1/4	104.7	18-7/8	47.9	7-1/16	17.0	19.8	9.2

Project Details

Project:	Approval Information
Consulting Engineer:	
Electrical Contractor:	
Distributor:	
Date:	
Contact at Glen Dimplex Americas:	
Comments:	