

CONVECTAIR

LEGATO

Split-Type

Room Air Conditioner



REMOTE CONTROL GUIDE

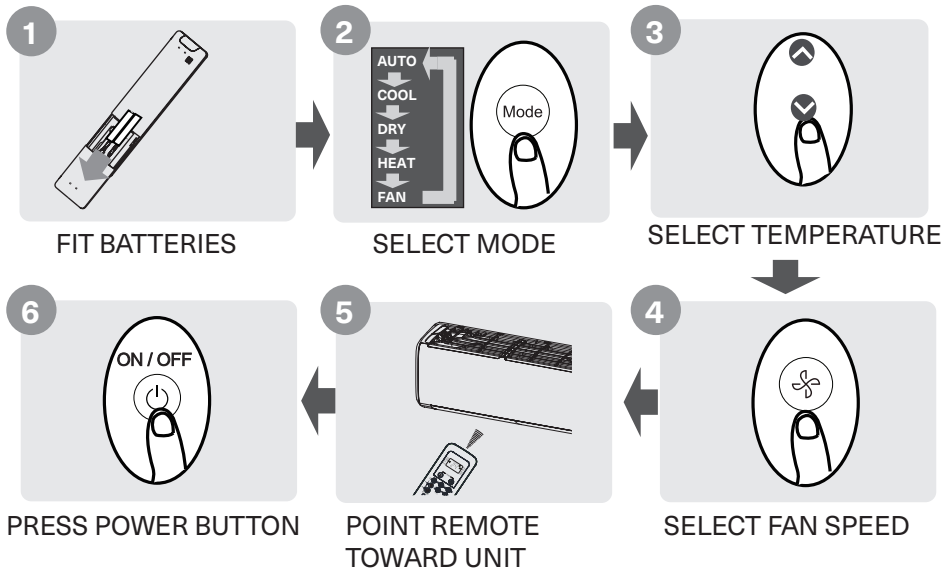
To be read and kept by the user.

7217030200R00

Contents

Quick Start Guide	3
Handling the Remote Controller	4
Buttons and Functions	5
Basic Functions	6
Basic Functions	7
How to Use Advanced Functions.	9

Quick Start Guide



NOT SURE WHAT A FUNCTION DOES?

Refer to the How to Use Basic Functions and How to Use Advanced Functions sections of this manual for a detailed description of how to use your remote with your ductless split room air conditioner.

SPECIAL NOTE

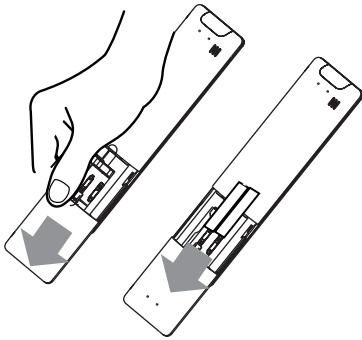
- Button designs on your unit may differ slightly from the example shown.
- If the indoor unit does not have a particular function, pressing that function's button on the remote control will have no effect.
- When there are wide differences between "Remote controller Manual" and "Owner's Manual" on function description, the description of "Owner's Manual" shall prevail.

Handling the Remote Controller

Inserting and Replacing Batteries

Your air conditioning unit may come with two batteries. Put the batteries in the remote control before use.

1. Slide the back cover from the remote control downward, exposing the battery compartment.
2. Insert the batteries, paying attention to match up the (+) and (-) ends of the batteries with the symbols inside the battery compartment.
3. Slide the battery cover back into place.



BATTERY NOTES

For optimum product performance:

- Do not mix old and new batteries, or batteries of different types.
- Do not leave batteries in the remote control if you don't plan on using the device for more than 2 months.

BATTERY DISPOSAL

Do not dispose of batteries as unsorted municipal waste. Refer to local laws for proper disposal of batteries.

TIPS FOR USING REMOTE CONTROL

- The remote control must be used within 8 meters (26 feet) of the unit.
- The unit will beep when remote signal is received.
- Curtains, other materials and direct sunlight can interfere with the infrared signal receiver.

NOTES FOR USING REMOTE CONTROL

The device could comply with the local national regulations.

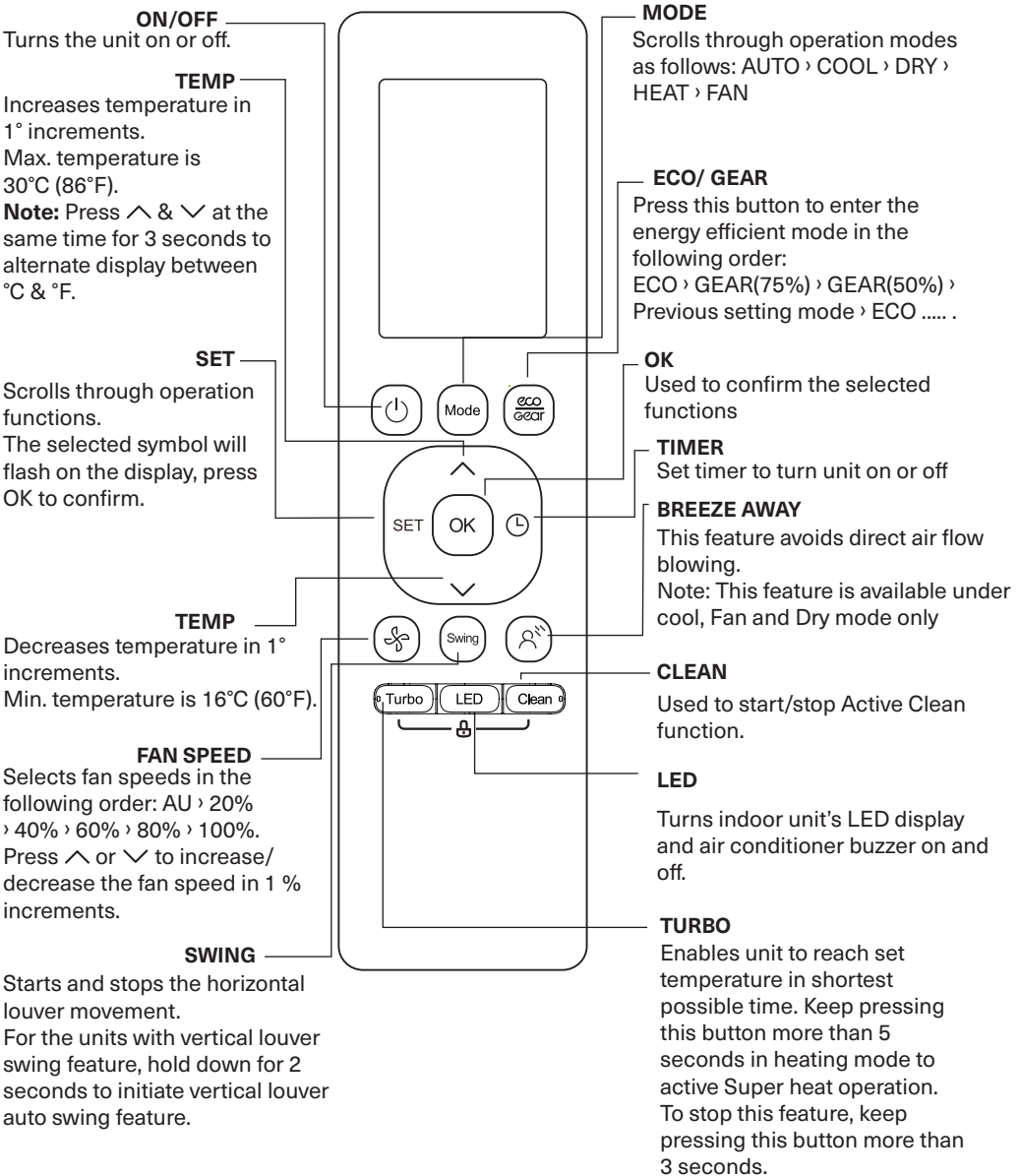
- In Canada, it should comply with CAN ICES-3(B)/NMB-3(B).

- In USA, this device complies with part 15 of the FCC Rules. Operation is subject to the following two conditions: (1) This device may not cause harmful interference, and (2) this device must accept any interference received, including interference that may cause undesired operation.

This equipment has been tested and found to comply with the limits for a Class B digital device, pursuant to part 15 of the FCC Rules. These limits are designed to provide reasonable protection against harmful interference in a residential installation. This equipment generates, uses and can radiate radio frequency energy and, if not installed and used in accordance with the instructions, may cause harmful interference to radio communications. However, there is no guarantee that interference will not occur in a particular installation. If this equipment does cause harmful interference to radio or television reception, which can be determined by turning the equipment off and on, the user is encouraged to try to correct the interference by one or more of the following measures: Reorient or relocate the receiving antenna. Increase the separation between the equipment and receiver. Connect the equipment into an outlet on a circuit different from that to which the receiver is connected. Consult the dealer or an experienced radio/TV technician for help. Changes or modifications not approved by the party responsible for compliance could void user's authority to operate the equipment.

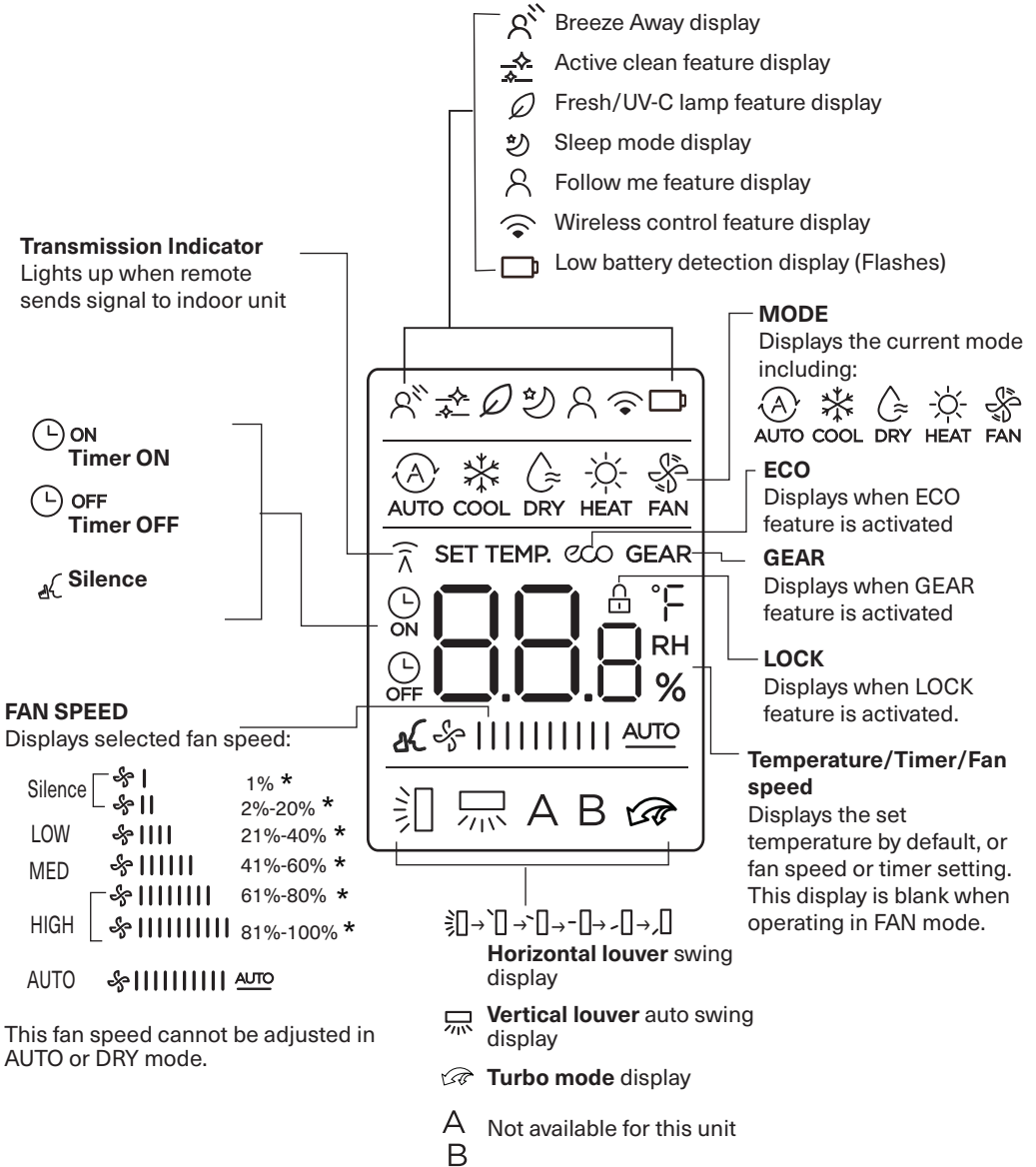
Buttons and Functions

Before you begin using your split room air conditioner, make sure to familiarize yourself with its remote control. The buttons on your remote may differ slightly from the example shown.



Basic Functions

Information are displayed when the remote controller is powered up. The display on your unit may differ slightly from the example shown.



This fan speed cannot be adjusted in AUTO or DRY mode.

Basic Functions

! ATTENTION Before operation, please ensure the unit has power.

FAN Mode

Select AUTO mode



Set your desired temperature



Turn on the air conditioner



NOTE:

1. In AUTO mode, the unit will automatically select the COOL, FAN, or HEAT function based on the set temperature.
2. In AUTO mode, fan speed cannot be set.

Cool or Heat Mode

Select COOL/HEAT mode



Set the temperature



Set the fan speed



Turn on the split room air conditioner



Dry Mode

Select DRY mode



Set your desired temperature



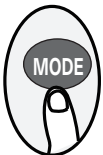
Turn on the split room air conditioner



NOTE: In DRY mode, fan speed cannot be set since it has already been automatically controlled.

Fan Mode

Select FAN mode



Set the fan speed



Turn on the split room air conditioner



NOTE: In FAN mode, you can't set the temperature. As a result, no temperature displays in remote screen.

Setting the timer

TIMER ON/OFF - Set the amount of time after which the unit will automatically turn on/off.

TIMER ON setting

Press TIMER button to initiate the ON time sequence.



Press up or down button for multiple times to set the desired time to turn on the unit.



Point remote to unit and wait 1 second, the TIMER ON will be activated.



TIMER OFF setting

Press TIMER button to initiate the OFF time sequence.



Press up or down button multiple times to set the desired time to turn off the unit.



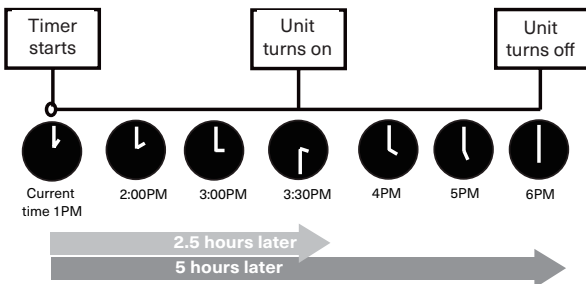
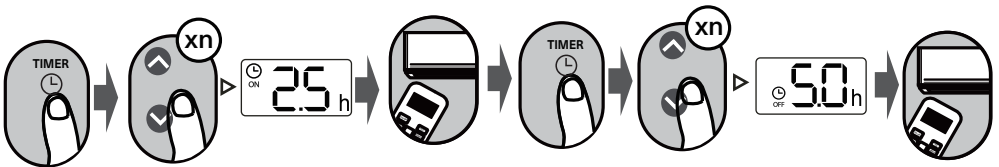
Point remote to unit and wait 1 second, the TIMER OFF will be activated.



NOTE:

- When setting the TIMER ON or TIMER OFF, the time will increase by 30 minutes increments with each press, up to 10 hours. After 10 hours and up to 24, it will increase in 1 hour increments. (For example, press 5 times to get 2.5h, and press 10 times to get 5h,) The timer will revert to 0.0 after 24.
- Cancel either function by setting its timer to 0.0 h.

Keep in mind that the time periods you set for both functions refer to hours after the current time.

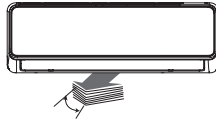


Example: If current timer is 1:00PM, to set the timer as above steps, the unit will turn on 2.5h later (3:30PM) and turn off at 6:00PM.

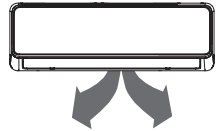
How to Use Advanced Functions

Swing function

Press Swing button

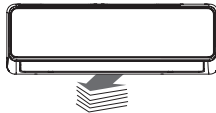


The horizontal louver will swing up and down automatically when pressing Swing button. Press again to make it stop.



Keep pressing this button more than 2 seconds, the vertical louver swing function is activated. (For the units with vertical louver swing feature)

Airflow direction



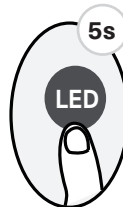
Continuously pressing the swing button results in 5 additional airflow directions to be set. Each setting allows the louver to be moved in a difference direction until your desired setting is achieved.

LED Display



Press LED button

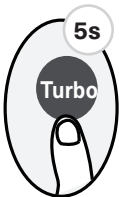
Press this button to turn on and turn off the display on the indoor unit.



Press and hold this button for 5 seconds (specific units)

Hold the LED button for 5 seconds to display the actual indoor temperature. Press and hold the LED button again for 5 seconds to revert back to display the desired set temperature

Lock Function



Press and hold the Clean and Turbo buttons simultaneously for 5 seconds to activate the lock function. No buttons will function until this setting is unlocked. To unlock this setting, press and hold Clean and Turbo buttons simultaneously for 2 seconds to unlock the unit.

ECO/GEAR function



Press this button to enter the energy efficient mode in a sequence of following:
ECO > GEAR (75%) > GEAR (50%) > Previous setting mode ECO...

Note: This function is only available under COOL mode.

ECO Operation:

Under cooling mode, press this button, the remote controller will adjust the temperature automatically to 24°C/75°F, fan speed of Auto to save energy (only when the set temperature is less than 24°C/75°F). If the set temperature is above 24°C/75°F, press the ECO button, the fan speed will change to Auto, the set temperature will remain unchanged.

Note: This function is only available under COOL mode.

GEAR Operation:

Press the ECO/GEAR button to enter the GEAR operation as following:

75% (up to 75% electrical energy consumption) > 50% (up to 50% electrical energy consumption) > Previous setting mode.

Under GEAR operation, the setting temperature will revert back in the display screen after 3 seconds you select the desired electrical energy consumption operation.

Silence function

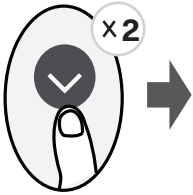


Press and hold the fan button for 2 seconds to activate or disable silence function.

Due to low frequency operation of compressor, it may result in insufficient cooling and heating capacity. Press ON/OFF, Mode, Turbo or Clean button or start sleep feature while operating will cancel silence function.

FP function

Press this button 2 times during one second under HEAT Mode and setting temperature of 16°C/60°F.



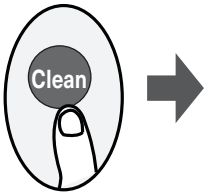
The unit will operate at high fan speed (while compressor on) with temperature automatically set to 8°C/46°F.

Note: This function is for heater setting only.

Press this button 2 times under HEAT Mode and setting temperature of 16 C/60 F to activate the FP function. Press On/Off, Mode, Fan and Temp. button or start sleep feature while operating will cancel this function.

Clean function

Press Clean button to active Active Clean function.



The Active Clean Technology washes away dust, mold, and grease that may cause odors when it adheres to the heat exchanger by automatically freezing and then rapidly thawing the frost. When this function is turned on, the indoor unit display window appears "CL", after 20 to 45 minutes, the unit will turn off automatically and cancel CLEAN function.

Turbo Function

Press Turbo button



When you select Turbo feature in COOL mode, the unit will blow cool air with strongest fan setting to jump-start the cooling process. When you select Turbo feature in HEAT mode, the unit will blow heat air with strongest fan setting to jump-start the heating process. For units with electric heat elements, the electric heater will activate and jump-start the heating process.



Super heat function

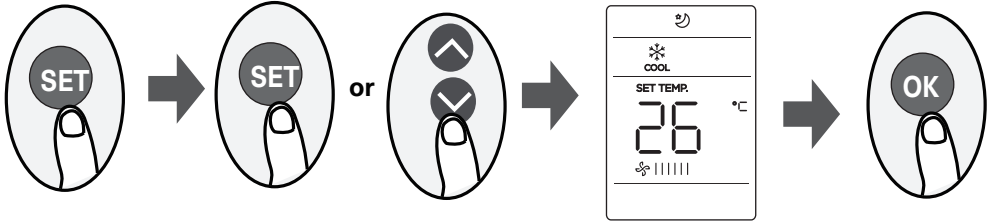
Press and hold Turbo button for 5 seconds in Heating/Auto heating mode to initiate super heat function. To stop this feature, long press this button for 3 seconds. This function is mainly used to improve the heating speed of the unit at low temperature.

Under super heat mode, the louver will open to its maximum angle to enable unit to reach preset temperature in shortest possible time.

Note:

- If the Super heat function is activated, "On" displays for 3 seconds on the indoor unit display window.
- If the Super heat function is stopped, "Off" displays for 3 seconds on the indoor unit display window.
- Change the mode or turn the unit off to stop the super heating operation.

SET Function



- Press the SET button to enter the function setting, then press SET button or up or down button to select the desired function. The selected symbol will flash on the display area, press the OK button to confirm.
- To cancel the selected function, perform the same procedures as above.
- Press the SET button to scroll through operation functions as follows:
- Fresh/UV-C lamp* > Sleep > Follow Me > AP mode

FRESH/UV-C lamp function

When this function is selected, the Ionizer or UV-C lamp (model dependent) will be activated. If has both features, these two features will be activated at the same time. This function will help to purify the air in the room.

Sleep function

The SLEEP function is used to decrease energy use while you sleep (and don't need the same temperature settings to stay comfortable). This function can only be activated via remote control. For details, see sleep operation in the Owner's Manual.

Note: The SLEEP function is not available in FAN or DRY mode.

AP function

Choose AP mode to do wireless network configuration. If it doesn't work by pressing the SET button. To enter the AP mode, continuously press the LED button seven times in 10 seconds.

Follow me function

The FOLLOW ME function enables the remote control to measure the temperature at its current location and send this signal to the air conditioner at 3 minutes intervals. When using AUTO, COOL or HEAT modes, measuring ambient temperature from the remote control (instead of from the indoor unit itself) will enable the air conditioner to optimize the temperature around you and ensure maximum comfort.

Note: Press the SET button to select Follow Me function, then press OK button to confirm.

Pressing the OK button for 3 seconds will start/stop memory feature of Follow Me function.

- If the memory feature is activated, "On" displays for 3 seconds on the screen.
- If the memory feature is stopped, "OFF" displays for 3 seconds on the screen.
- While the memory feature is activated, the ON/OFF button, mode change, or power failure will not cancel the Follow me function.